

## MULTRASALVOR 5

**CALL SIGN** : PH10  
**CLASSIFICATION** : Trading area Coastal waters  
up to 30 nautical miles  
Classification society:  
Germanischer Lloyd  
Class ship type Supply  
vessel / Tug; Class notation  
100 A5 K  
**FLAG** : Dutch  
**IMO** : 8871625



### DIMENSIONS

L.O.A. : 35.51 m  
B.O.A. : 8.50 m  
Min. airdraft : 7.50 m  
Max. airdraft : 15 m  
Gross tonnage : 211 tons  
Net tonnage : 63 tons  
Max. deck load : 10 ton/m<sup>2</sup>  
Free deck space : 128 m<sup>2</sup>

### ACCOMMODATION

2-men cabin : 3 (three)  
Mess room : 1 (one)  
Galley : 1 (one)

### NAVIGATION AND COMMUNICATION SYSTEMS

GMDSS : A1

### MACHINERY / PROPULSION

Maximum speed : 9 knots  
Power output : 426 kW / 579 hp  
Propulsion : Twin fixed pitch propellers, two active nozzle &  
bow thruster  
Main engines : Mitsubishi S6A-MPTK  
Auxiliary engines : JCB 448TGWA72 380/220V  
JCB 448TGWA72 380/220V

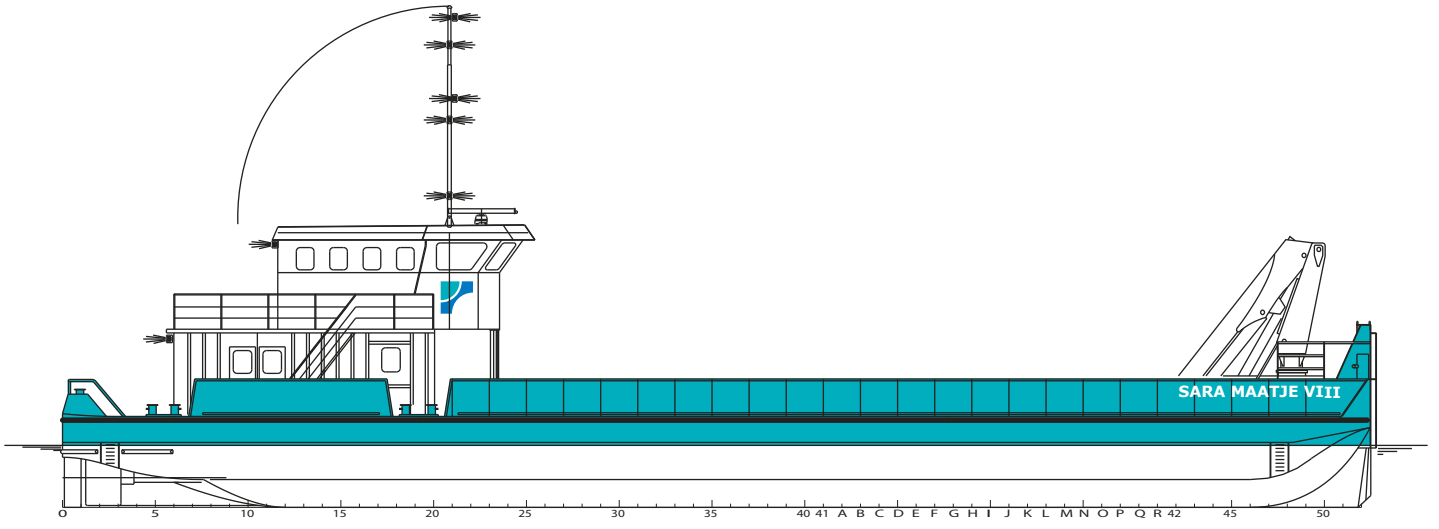
### DECK EQUIPMENT

Hydraulic deck crane : 80 tm, 6.3 ton at 11.5 m  
Biesbosch Nabrico 40 V : 2 times  
with pull force 6 T on  
second layer.

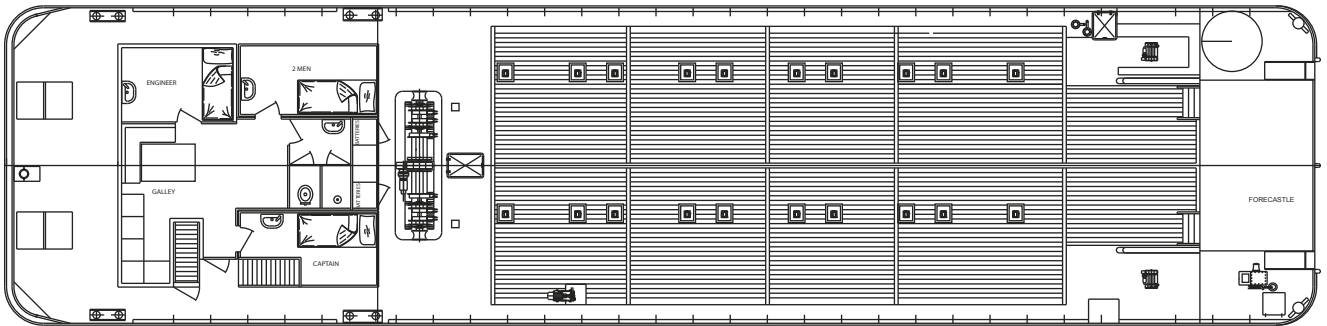
### TANK CAPACITIES

Fresh water : 213.8 m<sup>3</sup>  
Fuel : 55 m<sup>3</sup>

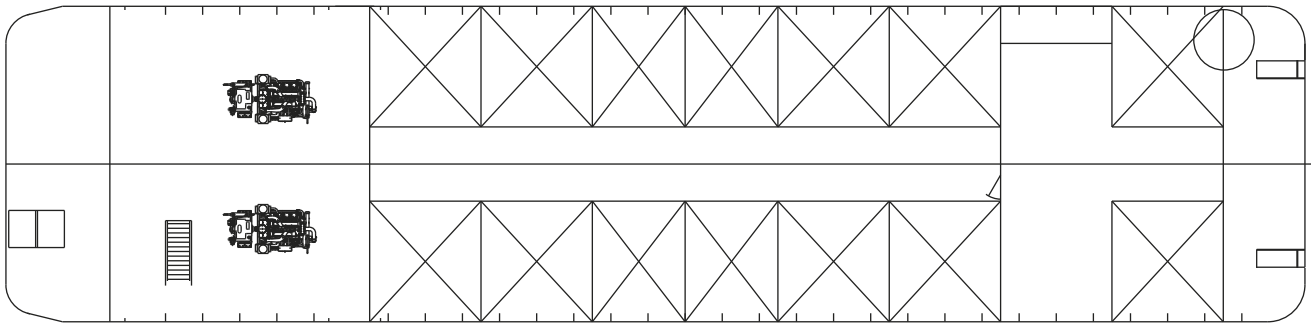




Profile



Main deck



Below main deck