

MULTRASALVOR 6

CALL SIGN	: PFHL
YEAR BUILT	: 2015
CLASSIFICATION	: Bureau Veritas ✘ HULL • MACH Tug unrestricted navigation AUT UMS
FLAG	: Dutch
HOMEPORT	: Terneuzen
IMO	: 9766413



DIMENSIONS

L.O.A.	: 26.37 m
Beam mld.	: 12.95 m
Max. draft	: 3.71 m
Gross Tonnage	: 309 GT
Max. displacement	: 654 tons

PERFORMANCE

Max. Bollard pull	: 50.5 tons
Max. speed	: 10.6 knots

PROPULSION

Main engine	: 2x Caterpillar 3512C
Total power	: 2610 kW (3500 HP) at 1600 RPM
Gearboxes	: 2x Reintjes WAF 773 / 7.087:1
Propulsion	: 2x Ø 2400 mm Promarin fixed pitch propeller in DMC Optima nozzles
Side thrusters	: 1x bow thruster 184 kW (250 HP), fixed pitch, hydraulically driven

DECK EQUIPMENT

Deck space	: 174 m ²
Deck load	: 10 t/m ²

Anchor handling/

Towing winch	: 1x Kraaijeveld KAW-30-H-TR/TR, double drum in waterfall execution
Anchor handling drum	: 100T pull 1st layer @ 5,9m/min, wire capacity 600 m Ø 48 mm, 9 layers, 150 ton brake holding (1st layer)
Towing drum	: 60T pull 1st layer @ 9,7m/min, wire capacity 750 m Ø 44 mm, 10 layers
Towing hook	: 1x Mampaey quick release disc type hook DCX 130.045.196
Tugger winches	: 1x Dromec HPV12000, pull 12 ton 1x Dromec HPV15000, pull 15 ton @ 5m/min, slack 20m/min Wire capacity 100 m, Ø 24 mm, @ 5 layers

DECK EQUIPMENT *cont.*

Towing pins + chain stopper	: 2x WK Hydraulics, towing pin, SWL 50T 1x WK hydraulics, chain stopper; SWL 75T, chain dia. 38-64 mm
Bow roller	: 1x 5,94 mtr width, Ø 1000 mm, SWL 150T
Stern roller	: 1x 2,19 mtr width, Ø 700 mm, SWL 125T
Deck cranes	: 1x HS Marine AKC290 LHE3 25.1T @ 8,3m 11,3 ton @ 16.5 m with 10T winch 1x HS Marine AKC290 LHE3 25.1T @ 8,3m 11,3 ton @ 16.5 m
Anchors + anchor winch	: 1x 360 kg Pool TW (HHP) + 1 spare. 1x Kraaijeveld KAB-1-H-19D, hydraulic driven winch

AUXILIARY EQUIPMENT

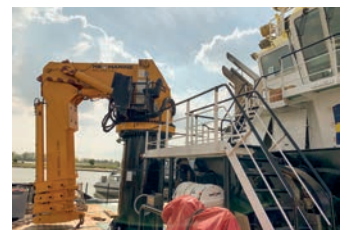
Generator sets	: 2x Caterpillar C4.4 DITA
Capacity	: 2x 107 kVA / 86 kW
Voltage, Frequency	: 400 V/230 V 50 HZ
Hydraulic set	: 1x Caterpillar C18TA-B 357kW (480 HP) @ 1800 RPM
Capacity	: 1065 l/min @ 350 bar
Transfer pumps	: 1x SIHI VWWSI, 50 m ³ /h for fuel oil 1x SIHI VWWSI, 50 m ³ /h for fresh water
Fuel oil separator	: 1x Westfalia OTC-2, capacity 1150 L/Hr

TANK CAPACITIES

Fuel oil	: 120.0 m ³
Fresh water	: 51.0 m ³
Lubricating oil	: 3.0 m ³
Dirty oil	: 3.6 m ³
Bilge water	: 4.7 m ³
Sewage	: 7.3 m ³
Fresh water ballast	: 48.0 m ³

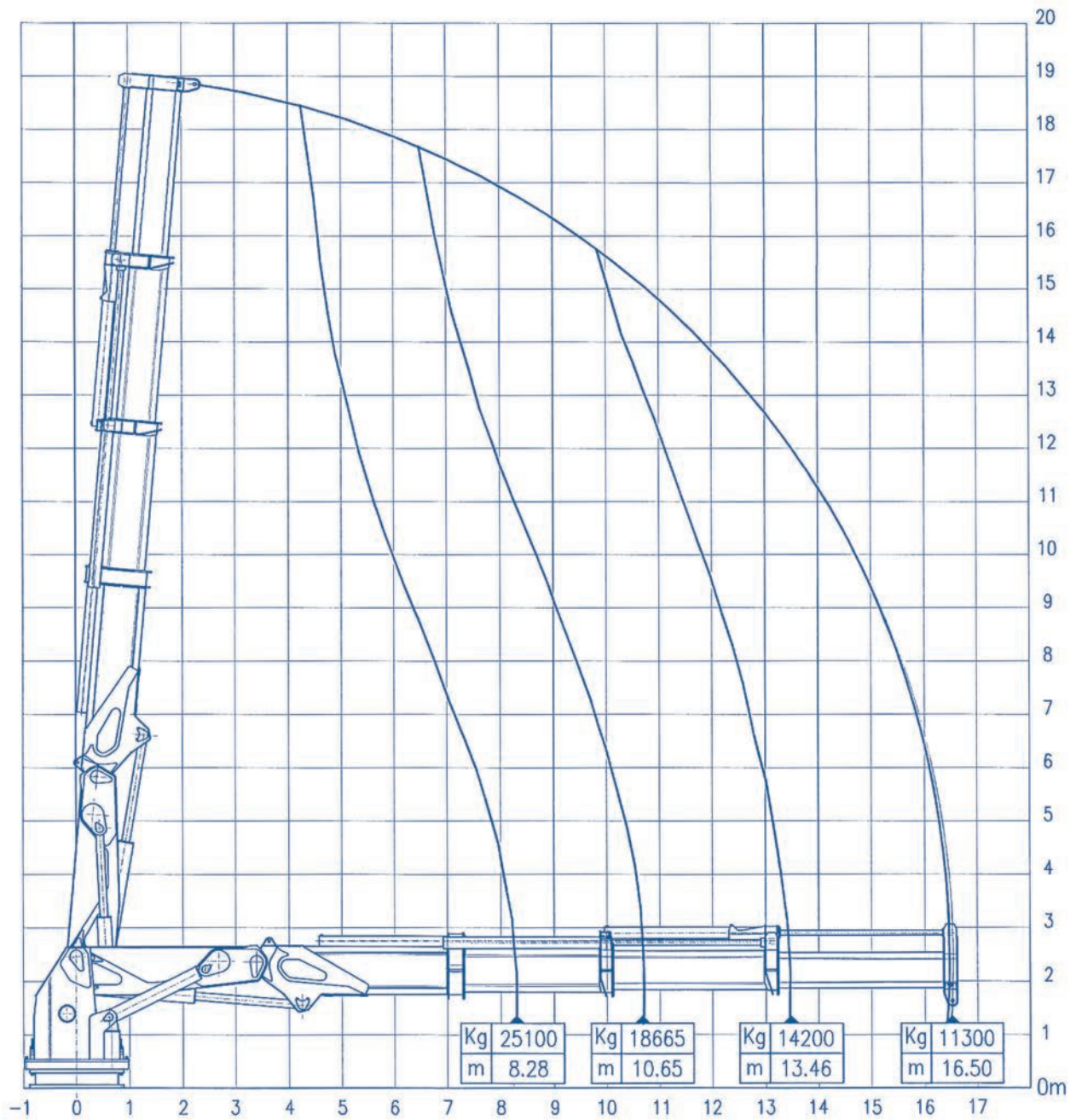
ACCOMMODATION

1-man cabin	: 2 (two)
2-men cabin	: 2 (two)
Messroom/Galley	: 1 (one)



WORKING DIAGRAM with HOOK

HS MARINE



Marine Crane model AKC 290 LHE3

Crane built and designed in according to DIN 15018 Class H1-B3